

# Stick Booms Diesel



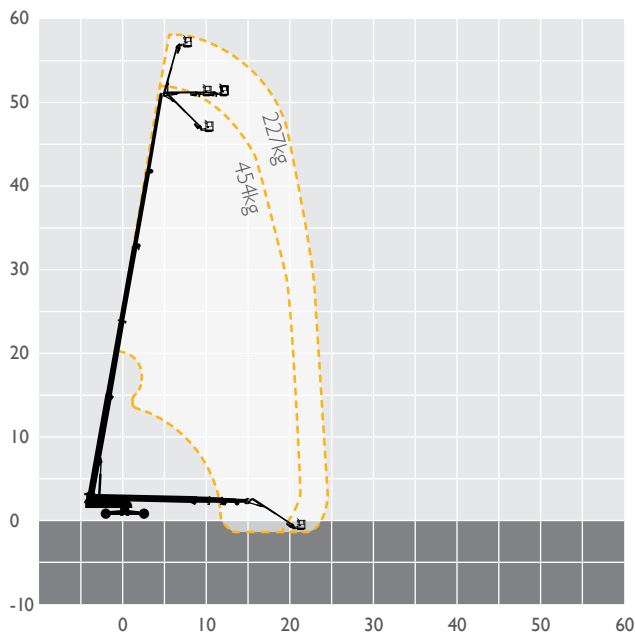
Preferred Powered Access provider to Nixon

## MACHINE SPECIFICATION SHEET

### BSI85DS 58.56m

REACH HEIGHT	58.56m	PLATFORM HEIGHT	56.56m
CLOSED LENGTH	14.57m	CLOSED HEIGHT	3.05m
WHEELBASE	4.57m†/5.03m††	WIDTH	2.49m†/5.03m††
LIFTING CAPACITY	227/454kg*	HORIZONTAL REACH	24.38m
CAGE DIMENSIONS	0.91x2.44m	WEIGHT	27,352kg
ROTATION	360°	TURNING RADIUS	7.12m††
POWER	DIESEL	IPAF CATEGORY	3b

FEATURED MODEL	JLG 1850SJS
----------------	-------------



Our team of skilled professionals will help you select the best access platform for your specific needs, ensure every machine is maintained to the highest standard and delivered to site on time.

- 6,000 machines at 21 depots across the UK
- Working heights ranging from 3.6m to 58.6m
- Fast delivery using our own transport fleet
- 24 hour and 48 hour delivery option

Keeping you in control of your account at the click of a button. View your account in real time, online 24 hours a day, 365 days per year.



**Online, anytime.**  
Simple, easy and convenient.

T: 0333 005 0003  
E: [enquiries@nixonextra.co.uk](mailto:enquiries@nixonextra.co.uk)

The information provided is for guidance only. It may change at any time in accordance with manufacturer's specification.



Hire | Sales | Training | Safety