

Stick Booms Diesel



AFI
group of companies

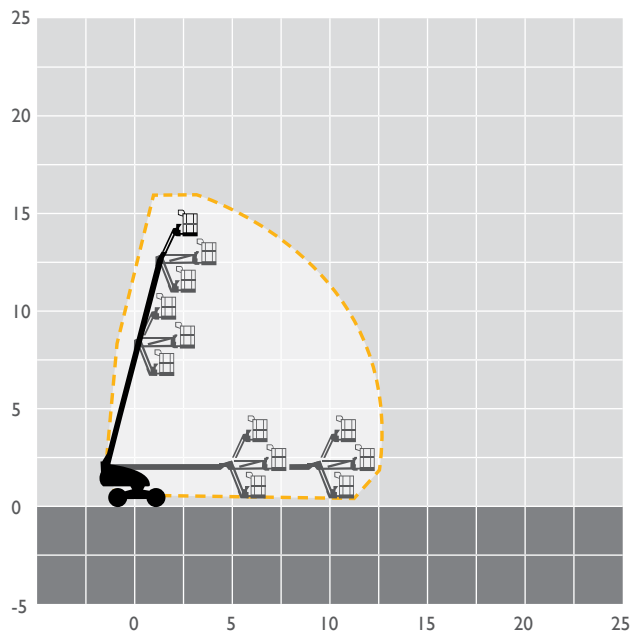
Preferred Powered Access provider to Nixon

MACHINE SPECIFICATION SHEET

BS46D 15.44m

REACH HEIGHT	15.44m	PLATFORM HEIGHT	13.44m
CLOSED LENGTH	8.42m	CLOSED HEIGHT	2.21m
CLOSED WIDTH	2.30m	HORIZONTAL REACH	12.30m
LIFTING CAPACITY	230kg	WEIGHT	6,800kg
CAGE DIMENSIONS	0.80x1.80m	TURNING RADIUS	4.80m
ROTATION	360°	IPAF CATEGORY	3b
POWER	DIESEL		

FEATURED MODEL	HAULOTTE HI6TPX*
ALTERNATIVE MODELS	GENIE S45*



Our team of skilled professionals will help you select the best access platform for your specific needs, ensure every machine is maintained to the highest standard and delivered to site on time.

- 6,000 machines at 21 depots across the UK
- Working heights ranging from 3.6m to 58.6m
- Fast delivery using our own transport fleet
- 24 hour and 48 hour delivery option

Keeping you in control of your account at the click of a button. View your account in real time, online 24 hours a day, 365 days per year.



Online, anytime.
Simple, easy and convenient.

T: 0333 005 0003
E: enquiries@nixonextra.co.uk

The information provided is for guidance only. It may change at any time in accordance with manufacturer's specification.

AFI
group of companies

Hire | Sales | Training | Safety