

# Stick Booms Diesel



**AFI**  
group of companies

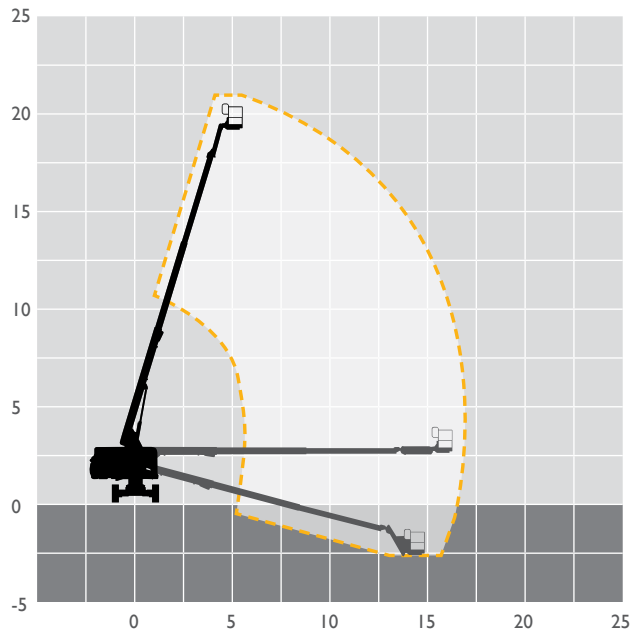
Preferred Powered Access provider to Nixon

## MACHINE SPECIFICATION SHEET

### BS60D 20.30m

REACH HEIGHT	20.30m	PLATFORM HEIGHT	18.30m
CLOSED LENGTH	8.46m	CLOSED HEIGHT	2.72m
CLOSED WIDTH	2.49m	HORIZONTAL REACH	15.48m
LIFTING CAPACITY	227kg	WEIGHT	9,732kg
CAGE DIMENSIONS	0.76x1.83m	TURNING RADIUS	5.54m
ROTATION	360°	IPAF CATEGORY	3b
POWER	DIESEL		

FEATURED MODEL	GENIE GS60*
ALTERNATIVE MODELS	HAULOTTE H21TX*



Our team of skilled professionals will help you select the best access platform for your specific needs, ensure every machine is maintained to the highest standard and delivered to site on time.

- 6,000 machines at 21 depots across the UK
- Working heights ranging from 3.6m to 58.6m
- Fast delivery using our own transport fleet
- 24 hour and 48 hour delivery option

Keeping you in control of your account at the click of a button. View your account in real time, online 24 hours a day, 365 days per year.



**Online, anytime.**  
Simple, easy and convenient.

T: 0333 005 0003  
E: [enquiries@nixonextra.co.uk](mailto:enquiries@nixonextra.co.uk)

The information provided is for guidance only. It may change at any time in accordance with manufacturer's specification.

**AFI**  
group of companies

Hire | Sales | Training | Safety