

# Stick Booms Diesel



Preferred Powered Access provider to Nixon

## MACHINE SPECIFICATION SHEET

### BS66DS 22.31m

REACH HEIGHT	22.31m	PLATFORM HEIGHT	20.31m
CLOSED LENGTH	10.21m	CLOSED HEIGHT	2.57m
CLOSED WIDTH	2.49m	HORIZONTAL REACH	17.30m
LIFTING CAPACITY	230kg	WEIGHT	13,150kg
CAGE DIMENSIONS	0.91x1.83m	TURNING RADIUS	5.36m
ROTATION	360°	IPAF CATEGORY	3b
POWER	DIESEL		

FEATURED MODEL	JLG 660SJS
ALTERNATIVE MODELS	HAULOTTE H23RTJ • GENIE GS65*

Our team of skilled professionals will help you select the best access platform for your specific needs, ensure every machine is maintained to the highest standard and delivered to site on time.

- 6,000 machines at 21 depots across the UK
- Working heights ranging from 3.6m to 58.6m
- Fast delivery using our own transport fleet
- 24 hour and 48 hour delivery option

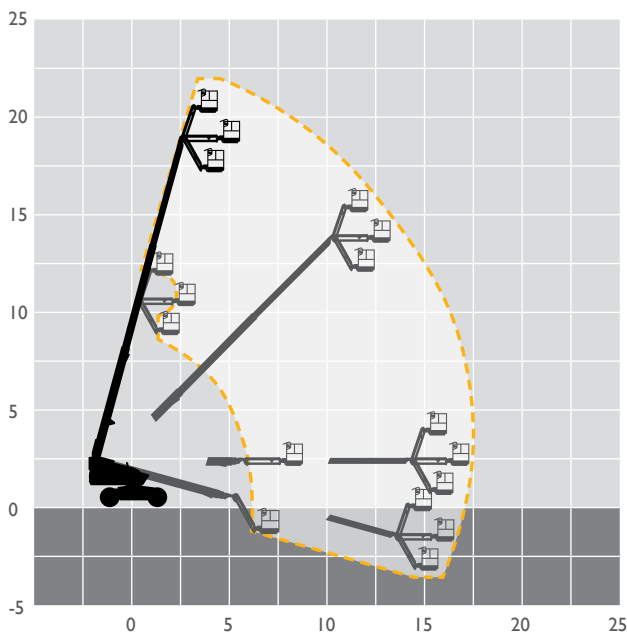
Keeping you in control of your account at the click of a button. View your account in real time, online 24 hours a day, 365 days per year.



**Online, anytime.**  
Simple, easy and convenient.

T: 0333 005 0003  
E: [enquiries@nixonextra.co.uk](mailto:enquiries@nixonextra.co.uk)

The information provided is for guidance only. It may change at any time in accordance with manufacturer's specification.



Hire | Sales | Training | Safety