

# Stick Booms Diesel



**AFI**  
group of companies

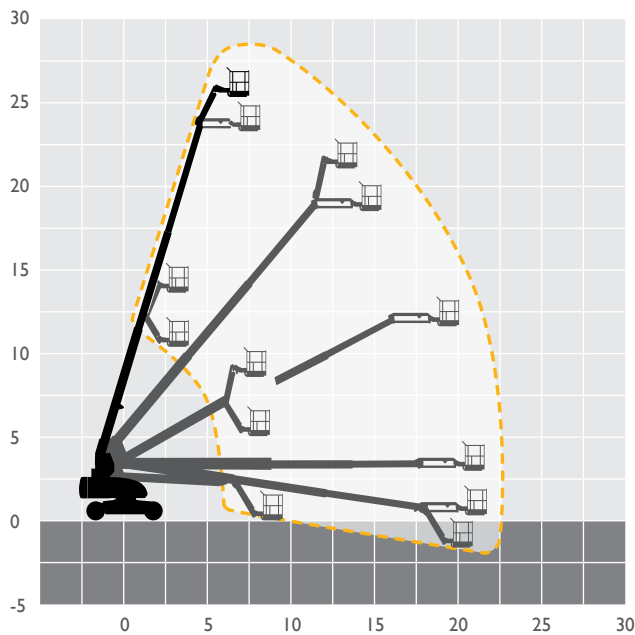
Preferred Powered Access provider to Nixon

## MACHINE SPECIFICATION SHEET

### BS86DS 28.21m

REACH HEIGHT	28.21m	PLATFORM HEIGHT	26.21m
CLOSED LENGTH	12.19m	CLOSED HEIGHT	3.05m
TRANSPORT WIDTH	2.49m	HORIZONTAL REACH	22.86m
LIFTING CAPACITY	230kg	WEIGHT	17,200kg
CAGE DIMENSIONS	0.91x2.44m	TURNING RADIUS	6.86m
ROTATION	360°	IPAF CATEGORY	3b
POWER	DIESEL		

FEATURED MODEL	JLG 860SJS
ALTERNATIVE MODELS	JLG 860SJ* • GENIE GS85*



Our team of skilled professionals will help you select the best access platform for your specific needs, ensure every machine is maintained to the highest standard and delivered to site on time.

- 6,000 machines at 21 depots across the UK
- Working heights ranging from 3.6m to 58.6m
- Fast delivery using our own transport fleet
- 24 hour and 48 hour delivery option

Keeping you in control of your account at the click of a button. View your account in real time, online 24 hours a day, 365 days per year.



**Online, anytime.**  
Simple, easy and convenient.

T: 0333 005 0003  
E: [enquiries@nixonextra.co.uk](mailto:enquiries@nixonextra.co.uk)

The information provided is for guidance only. It may change at any time in accordance with manufacturer's specification.

**AFI**  
group of companies

Hire | Sales | Training | Safety